

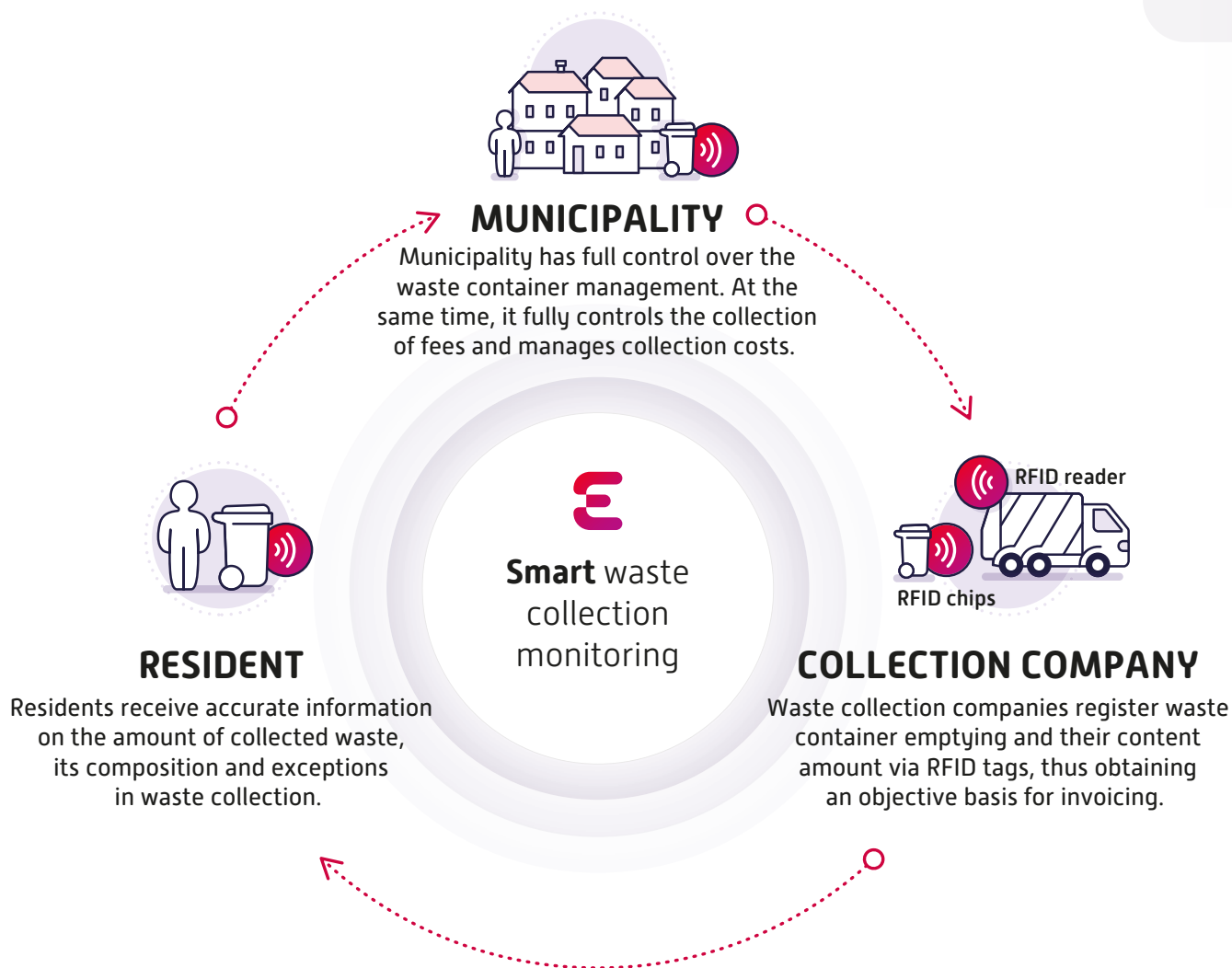


# Smart waste collection management



# Comprehensive waste collection monitoring

ESONA is a comprehensive system that helps all participants in the process of waste generation, separation and collection. It provides citizens with a transparent invoicing system for the waste actually generated. It allows waste collection companies to properly plan waste collection and its routing. It provides municipalities with a detailed overview of the amount of collected waste and waste container registration.



**ESONA** Eco-friendly waste management



Client zone



Mobile application



Automatic registration of emptying



Connection to the municipality IS



Bulk waste collection



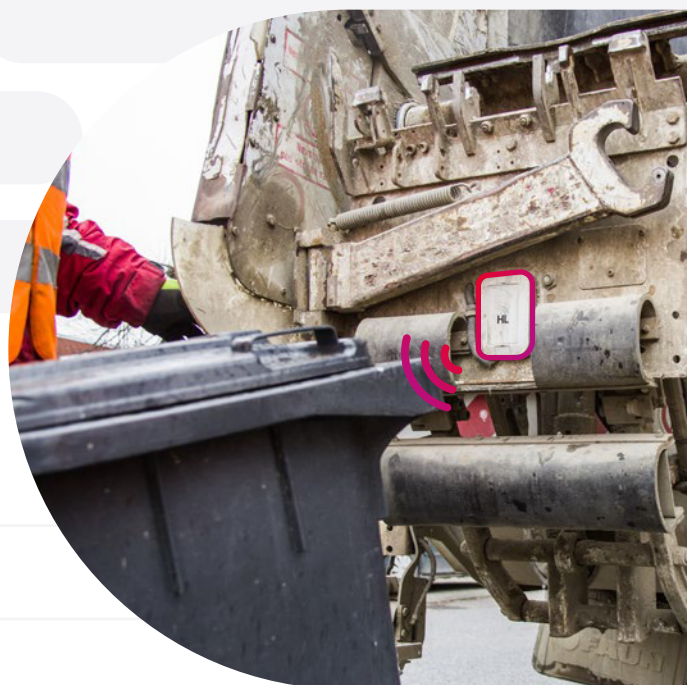
RFID tags and readers



Each municipality has a system that registers all waste containers marked with electronic RFID tags with a unique code. This tag is also assigned to the fee payer in the municipality's system. The system thus records data on payment orders, payments and waste collections for each payer. ESONA precisely identifies the type, volume and content of waste containers. It accurately distinguishes between mixed municipal waste and sorted collection of paper, plastics, glass, metals, multilayer materials or biodegradable waste.

## Monitoring of container emptying

The collection company identifies and records the waste container tag as well as its collection exceptions. The device on the collection vehicle allows you to record GPS coordinates, date and time of collection. The recorded data is automatically stored in a central database. The system provides users with information on the status of collection, the actual amount of waste collected and collection exceptions.



## Registration and management

ESONA provides detailed information on all waste containers in the municipality. Information on waste collection, fees from payers and costs is recorded in a central database. Employees of the town or village, collection companies and residents have access to the data in the database at various levels. Data is accessible from various devices, which facilitates work in the office and in the field.





## Benefits for municipalities



### Reducing hidden costs

Reduce waste collection and disposal costs by accurately registering waste containers and the amount of waste collected.



### Precise list of payers

Thanks to the assignment of the payer to the waste containers, you will find out who pays for the collection of waste and who uses the service illegally.



### Assessment of waste separation

Based on the data from RFID tags you will find out exactly how much mixed municipal waste is produced in your municipality.



### Motivation for waste separation

Accurate registration in the system will allow the residents of your municipality to pay only for the waste they actually generate.



## Benefits for collection companies



### Overview of emptied containers

Thanks to an overview of the real number of emptied containers, you can very easily prepare an objective invoicing for services.



### Contact-free recording

Loading RFID tags during container emptying takes place automatically, which saves your employees' time and simplifies their work.



### Vehicle routing optimization

Based on historical data, you can plan the ideal vehicle route according to collection days, thus saving your costs.



### Notification of changes in collection

ESONA will allow you to easily alert residents about any changes in the collection of municipal and sorted waste.

## Contact us



+421 903 567 241



info@esona.sk

[www.esona.sk/en](http://www.esona.sk/en)

### Branch office

MIM, s.r.o.,  
Hraničná 18,  
821 05 Bratislava  
Slovakia

### Headquarters

MIM, s.r.o.,  
Slnečná 211/1,  
010 03 Žilina  
Slovakia